



Some of the equipment shown in this brochure is optional and may not be available on all models or in all markets. All specifications are subject to change without notice. Please contact your local dealer for the latest information.

SsangYong Motor Company

Global Marketing HQ
12th Floor, Poonglim B/D 823,
Yeoksam-dong Gangnam-gu, Seoul,
135-784, Korea
Phone : 82-2-3469-2206
Fax : 82-2-3469-2283
Internet : www.smotor.com

SYMC 201202 LHD ENGLISH PRINTED IN KOREA

CLASSY UTILITY VEHICLE
korando



SsangYong Motor Company

Wherever you choose to go, it has got to be beautiful.

There is no such road that can hold you back.
Be free to roam anywhere your heart may lead.
Your will, thoughts, and distinctions are what make you the
admirable person you are.

This is why Korando is the elegant symbol of all SUVs.



When you aim to fulfil your goal in life, your restlessness brings out your inner beauty.

Striving towards your dream will make you the person you are.
Along with Korando beside you it will perfect your dream.
Korando's grille that resembles your strong will,
headlamps that always illuminate to your final destination,
and exterior rear view mirrors that take care of the outside world,
with all of these features you would be one step closer to your dream.



Maturity opens the door to modesty.

Exquisite workmanship hidden behind a dynamic silhouette redefines the superb personality of an individual.



Captivating looks impossible to resist.

An attraction like nothing you've ever seen will change the current of the times. Be aware of the moment Korando unveils its beauty



RADIATOR GRILLE
mesh type radiator grille shows sporty front look



TWO-TONE BUMPER
chrome accented two-toned bumper well matches with its front styling



HYBRID BLADE WIPERS
contemporary looking hybrid blade wipers add a stylish finish



ROOF RAILS
they add robust look of original SUV



TAILGATE GARNISH
chrome inserted tailgate garnish looks luxurious



DUAL TAIL PIPE
chrome plated dual tail pipe enhances rear styling with sporty look

Aesthetics realization in exquisite style

Korando now comes to you with an elegant design that further accentuates its ultimate beauty



HEAD LAMP
harmonizes with the dynamic lines



FOG LAMP
matches with the two-toned bumper to maximize design consistency



LED TURN SIGNAL LAMP
gives more elegant appearance



WELCOMING LIGHT
ensures driver's safety while getting in and out of the vehicle by illuminating the surrounding area



REAR COMBINATION LAMP
shows its unique refined curves



LED HIGH MOUNTED STOP LAMP
harmonized with body coloured rear spoiler



Stunning interior to enhance your inner beauty

As you already know, people's point of view will surely change once they enter your Korando.



SUPER VISION CLUSTER



GAUGE CLUSTER



HEATED STEERING WHEEL



2-DIN AUDIO SYSTEM WITH MP3 AND CD PLAYERS



RDS AUDIO SYSTEM



AUDIO REMOTE CONTROL SWITCH WITH BLUETOOTH HANDS FREE



Unique thoughts make life better in excellence.

Each and every one of us has a unique lifestyle. That is why we have thought of every possible seating arrangement and storage space to meet your various needs.



RECLINING SEAT



REAR FLAT FLOOR



HEATED SEATS



2ND ROW FOLDED FLAT 40%



2ND ROW FOLDED FLAT 60%



2ND ROW FOLDED FLAT COMPLETE

Choosing a dynamic yet elegant life

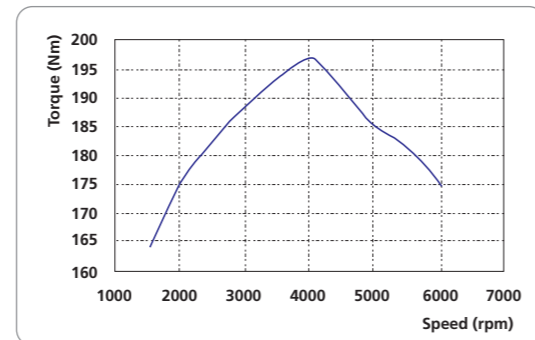
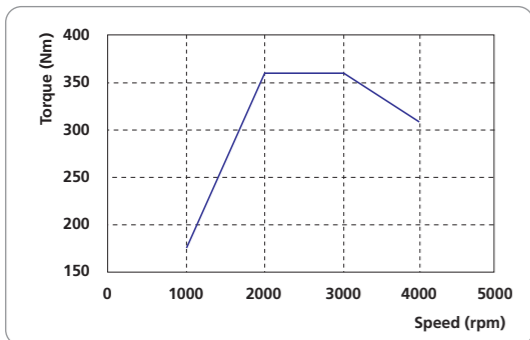
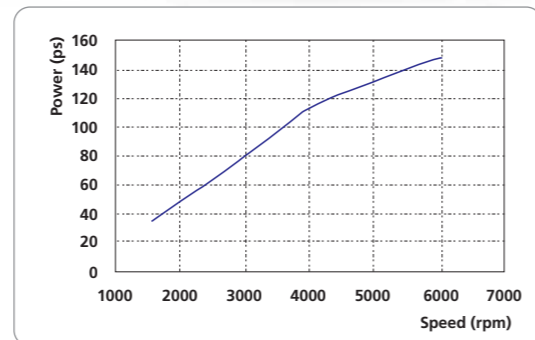
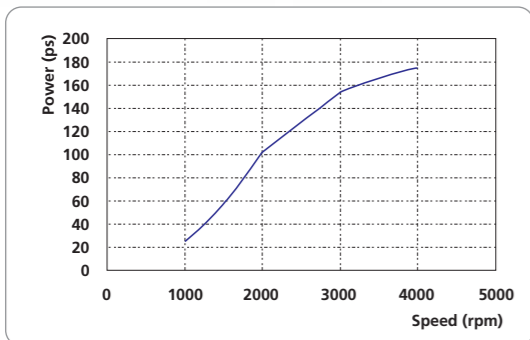
'Live your life to the full but with dignity',
is the motto of Korando's development.
Korando treats you to an all new driving experience.



Environment-friendly e-XDi200 diesel engine and e-XGi 2.0L petrol engine that complies with the EURO5 emission standards

e-XDi200 Diesel engine

e-XGi 2.0L Petrol engine



THUMBS UP MANUAL MODE

Switches are conveniently located on both the gearshift knob and steering wheel for you to shift up(+) or down(-) manually for a sportier driving sensation

6-SPEED AUTOMATIC TRANSMISSION

E-Tronic 6-speed automatic transmission ensures dynamic driving



6-SPEED MANUAL TRANSMISSION

Designed for easy and precise shifting, the 6-speed manual transmission supports smooth driving without shift shocks



Making your safety the utmost priority

Prepared to protect you and your family should the unthinkable ever occur, when you travel to an uncertain road.



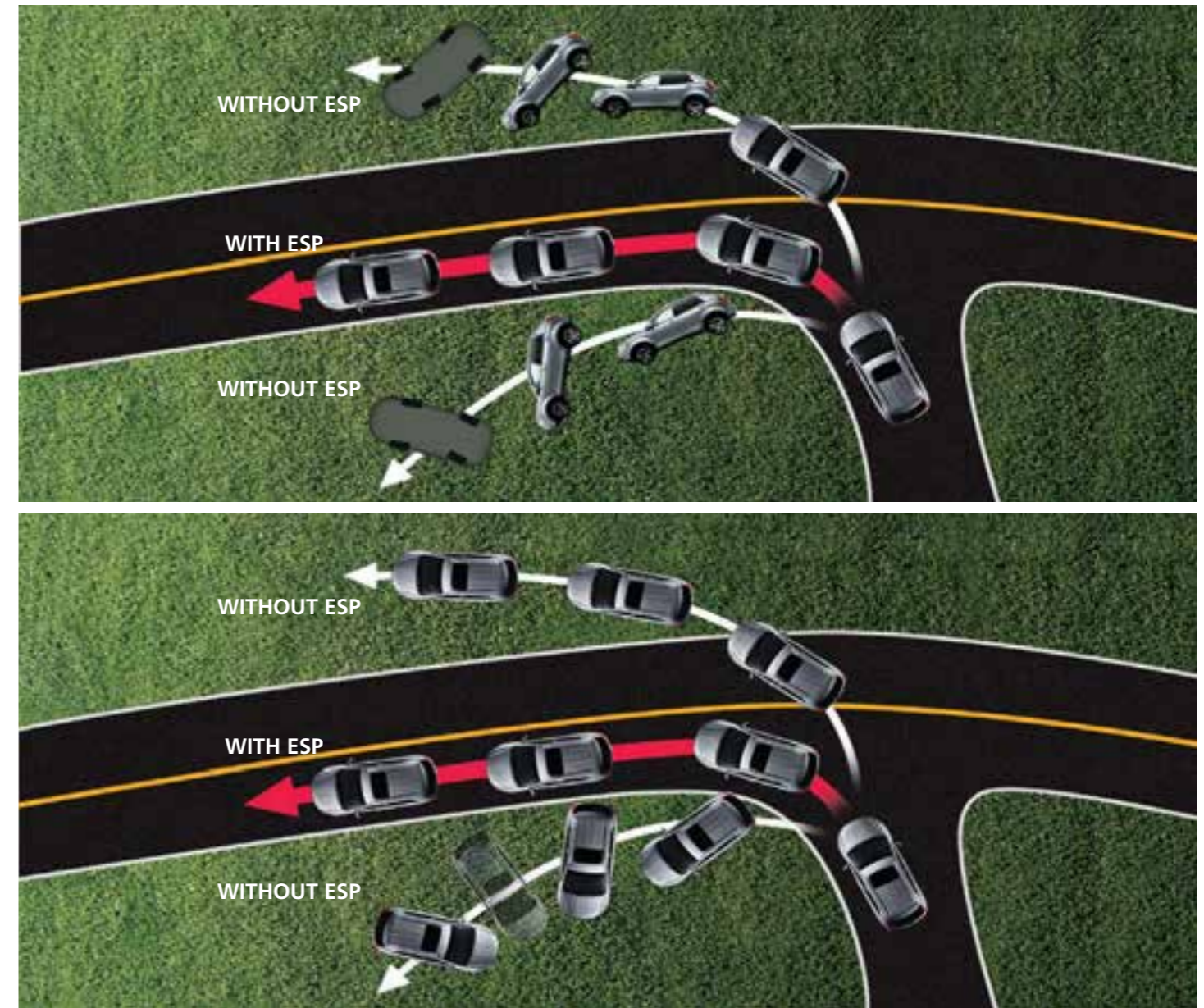
ELECTRONIC ACTIVE HEAD-RESTRAINT



BUILT-IN 3 POINTS CENTRE SEATBELT

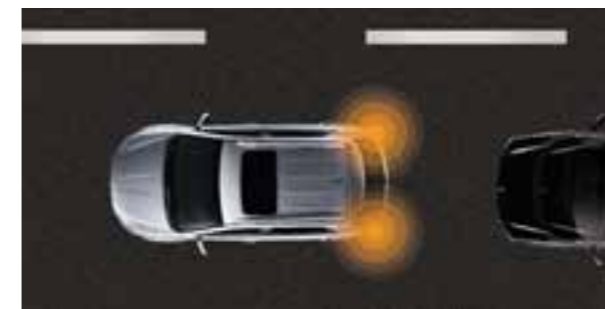


ISO-FIX FOR CHILD SEAT



Electronic Stability Program(ESP)

The Electronic Stability Program prevents wheels from slipping and the driver from under-steering or over-steering. Incorporated into the ESP are the anti-slip relation, automatic brake differential, anti-lock brake, active rollover protection, hill start assist and emergency stop signal systems to monitor vehicle and road conditions and intervene when a potentially dangerous situation is detected. The possibility of an accident is reduced dramatically as a result.



EMERGENCY STOP SIGNAL (ESS)
It warns vehicles at the rear of emergency stops and ABS activation.



HILL START ASSIST (HSA)
It's sometimes tough pulling away when you're facing uphill. HSA minimizes backward rolling on steep ascents.

Delicately sculptured for your keen senses

Every detail-even the smallest and slightest feeling you get while driving-has been considered in Korando's technology.



Active AWD

Under normal conditions, the Active AWD system provides the most power to front wheels(2WD). However, as road conditions worsen and the wheels start to slip, the electronic control unit transfers optimum torque to the rear wheels

How Active AWD works



NORMAL ROAD CONDITIONS
Mostly 2WD



SNOWY & ICY ROAD CONDITIONS
4WD for better stability



SNOWY & ICY INCLINES
50:50 torque distribution front and rear (4WD Lock)



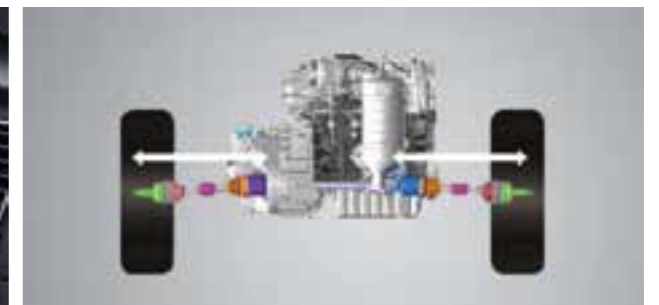
MACPHERSON STRUT FRONT SUSPENSION
Full type frame is applied to offer smooth and comfortable ride



MULTILINK REAR SUSPENSION
Multiple links diffuse impact and even fine vibrations are dampened to enhance ride quality



SPEED ADJUSTABLE ELECTRIC POWER STEERING
Steering power is heavily assisted in low speed and lightly assisted in high speed to maximize stability and manoeuvrability



Equal-length drive shaft is applied for excellent straight travelling stabilization

CONVENIENCE ITEMS



SAFETY SUNROOF



WIND SHIELD DE-ICER



SOLAR CONTROLLED GLASS



SAFETY POWER WINDOW



OBSTACLE WARNING SYSTEM



PRIVACY GLASS



RAIN & DUSK SENSOR



LUMBAR SUPPORT



ONE TOUCH TRIPLE SIGNAL INDICATOR



POWER ADJUSTMENT DRIVER'S SEAT



MANUAL PUMPING DRIVER'S SEAT



CLIMATE CONTROL SWITCH



ECO CRUISE CONTROL



TILT & TELESCOPIC STEERING WHEEL



SUNVISORS WITH ILLUMINATED MIRROR



USB MEMORY SLOT & AUX PORT



PASSENGER'S AIRBAG OFF SWITCH



ELECTROCHROMIC REARVIEW MIRROR



TYRE REPAIR KIT



TEMPORARY SPARE TYRE



FULL SIZE SPARE TYRE



LUGGAGE COVER



COAT HOOK IN THE TRUNK AREA



LUGGAGE CENTRE TRAY



DASHBOARD UPPER TRAY



DASHBOARD LOWER TRAY



GLOVE BOX & INNER TRAY



SHOPPING BAG HOOK



SEATBACK POCKET



WOOD GRAIN (GENERAL AREA ONLY)

EXTERIOR COLORS



TONIC GREY
(ACG)



SABLE GREY
(EAX)



VITAMIN RED
(RAF)



GRAND WHITE
(WAA)



ICE BLUE
(BAO)



SPACE BLACK
(LAK)



SILENT SILVER
(SAI)

WHEELS

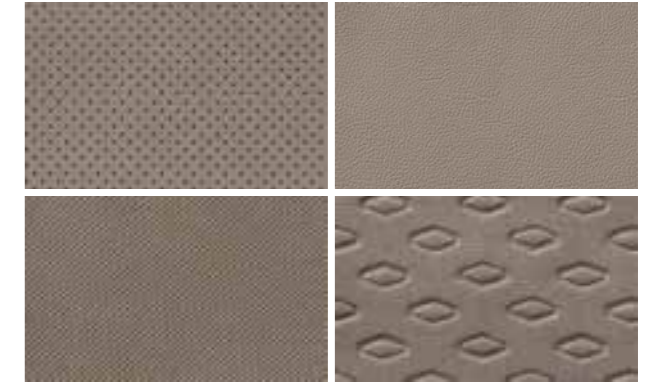


16" ALLOY WHEEL & 215/65R TYRE 17" ALLOY WHEEL & 225/60R TYRE 18" HYPER SILVER WHEEL & 225/55R TYRE

INTERIOR COLORS



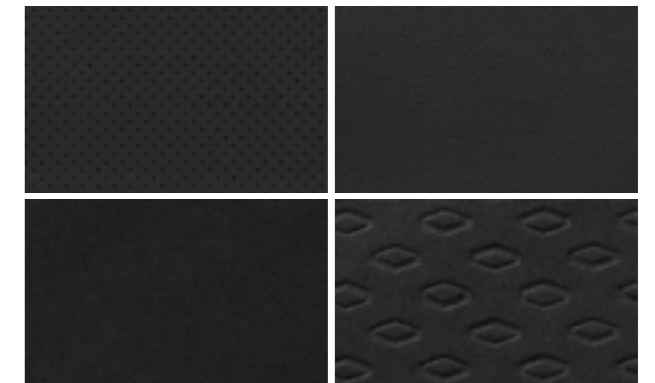
BEIGE INTERIOR



LEATHER SEAT
FABRIC SEAT



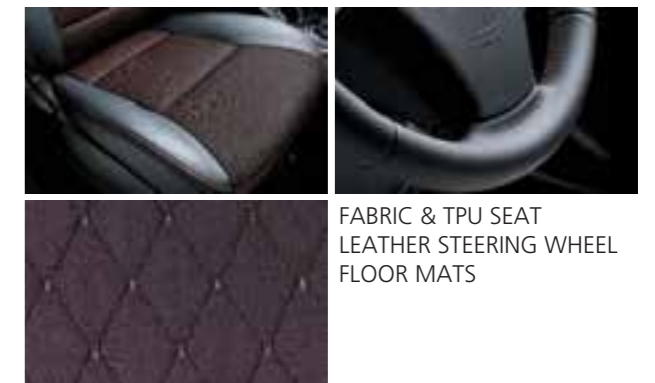
BLACK INTERIOR



LEATHER SEAT
FABRIC SEAT



BLACK INTERIOR - ORANGE SPECIAL



FABRIC & TPU SEAT
LEATHER STEERING WHEEL
FLOOR MATS

FEATURES LIST

Mechanical
175ps 2.0L eXDi diesel engine with CDPF
149ps 2.0L eXGi petrol engine
Active AWD
6-speed manual transmission
6-speed automatic transmission with thumbs-up manual mode
Macpherson strut front suspension
Multi-link rear suspension
Electronic stability program (ESP) with emergency brake assist, hill start assist (HSA), active roll-over protection (ARP) and emergency stop signal (ESS)
Hydraulic power steering
Electric power steering (EPS)
Seats
6-way power driver's seat
Pumping height adjustable driver's seat
Lumbar support driver's seat
60:40 split folding 2nd-row seats with folding centre armrest
Luxurious leather seat upholstery for both class and comfort
Appealing woven cloth seat upholstery
Heated front and 2nd row seats
Climate control
Fully automatic air conditioning with temperature sensor
Manual air conditioning with maximum air conditioning function
Rear heating duct to enhance climate control effectiveness
PTC (Positive Temperature Coefficient) heater
Appearance
Chrome coated radiator grille
All-around tinted glass
Solar controlled windshield glass
Privacy glass (rear door windows and tailgate window) to keep interior cool and add the look of luxury
Fashion roof rails
Sporty air spoiler with LED high mounted stop lamp
Acoustic engine cover to dampen noise
18" hyper silver wheels with 225/55 silica tyres
17" alloy wheels with 225/60 silica tyres
16" alloy wheels with 215/65 silica tyres
Illuminated ignition key slot
Luxury leather steering wheel trim
Carbon grain on instrument panel
Floor mats
Welcoming light to illuminate the ground area
Two-toned lower mouldings
Chrome plated dual tail pipe
Body coloured exterior door handles
Deluxe console for manual gearbox
Hybrid blade wipers
Convenience
Super Vision cluster
LED side repeater on exterior mirror
Battery saver to ensure power reserve

2-Din audio system with mp3 and CD players (with RDS for EU region)
USB memory slot and Aux. port
Bluetooth hands-free
Pole antenna on the rear roof
Height adjustable headlights
Windshield wiper de-icer
Rain sensing wipers and automatic headlight activation
One-touch triple signal indicators
Heated tailgate window with timer to defrost before vehicle starting
Safety power sunroof that slides or tilts, with roof blind to keep the interior cool
Power window with safety (anti-trap) features
Remote keyless entry system with panic alarm
Six speakers including 2 tweeters for high level sound
Steering wheel audio system controls
Dual spray type washer nozzles
Trip computer with outside temperature indication
12V DC power outlets under the instrument panel(M/T) and in the load area
Exterior door mirrors that can be electrically adjusted, folded and heated
Mobile ashtray
Digital clock on the dashboard
Dual gas filled tailgate struts
Centre storage console
Grip on the inside of the tailgate to facilitate closing
Cup holders in the front and rear
Sun visors with illuminated vanity mirror
Luggage cover and net
Useful toolbox in the load area
Electronic tailgate opening release switch
Manual tilt and telescopic steering wheel
Dashboard upper tray
Heated steering wheel
Luggage board hook
Safety
High integrated semi frame monocoque body structure
Door impact beams for optimal protection from side collisions
Dual airbags in front with seatbelt load limiters and pretensioner
Curtain airbags for front and rear passengers
Side airbags for front passengers
Active headrest for front passengers
Reversing warning system with 3-stage alarm
4-channel anti-lock braking system
Front ventilated disc brakes
Rear disc brakes
Emergency Stop Signal (ESS)
Door courtesy lamps
Heightened security from an immobilizer system
Rear wiper and washer
Hand-operated parking brake
Childproof safety lock
Automatic speed-sensing door locks
Reminder alarm and speed-sensing feature for front passenger seatbelts
Rear 3-points seatbelt
ISO-fix and tether anchorage for child seat
Electrochromic rearview mirror

TECHNICAL DATA

Engine		Diesel 2.0L				Petrol 2.0L			
Driven Wheels		2WD		AWD		2WD	AWD		
Transmission		6MT	6AT	6MT	6AT	6MT			
Dimensions	Overall length	mm	4,410				←		
	Overall width	mm	1,830				←		
	Overall height	mm	1,675 (1,710 : With roof rack)				←		
	Wheel base	mm	2,650				←		
	Tread	Front	mm	1,573				←	
		Rear	mm	1,558				←	
	Overhang	Front	mm	920				←	
		Rear	mm	840				←	
	Min. clearance	mm	180				←		
	Min. turning radius	m	5.4				←		
Weight	Gross vehicle weight	kg	2,180		2,260		2,100	2,170	
	Kerb weight	kg	1,591~1,645	1,611~1,665	1,672~1,727	1,692~1,747	1,537~1,592	1,618~1,673	
	Gross trailer weight	Braked	kg	2,000				1,500	
		Unbraked	kg	750				←	
Engine	Fuel	-	Diesel			Gasoline			
	Capacity	cc	1,998				←		
	Bore X Stroke	mm	86.2 X 85.6				86 X 86		
	Compression ratio	-	16.5 : 1				10.5 : 1		
	Number of cylinder	-	4 in-line				←		
Performance	Max. power	kW/rpm	129 / 4,000				109.6 / 6,000		
		ps/rpm	175 / 4,000				149 / 6,000		
	Max. torque	Nm/rpm	360 / 2,000~ 3,000				197 / 4,000		
	Max. speed	km/h	179	186	179	186	163	←	

DIMENSION





A new SUV genre that will expand your horizons
Classy Utility Vehicle Korando

