



SsangYong Motor Company

Some of information is optional and may differ from region to region. All the information and illustrations are based on data available at the time of publication and subject to change without notice. Please contact local dealer for more information. SYMC 201305

ENGLISH Printed in KOREA

CHAIRMAN 



The Chairman W offers prestige befitting a CEO



The Chairman W speaks to your refined taste.

The Chairman W inspires admiration with a blend of straight and curved lines. Every ride brings you a new experience with a magnificent but tidy design.





Every moment with the Chairman W will present you with utmost comfort and silence. Plan your daily schedule and make yourself at home in the space cut off from outside interruptions. You deserve it. The outstanding sedan is easily recognizable from every angle, even from behind, as are you.

The Chairman W offers cordial treatment even to the driver and luxurious interior shows the essence of craftsmanship.

Unlike other chauffeur-driven sedans, the Chairman W treats the driver as another VIP so that he can show great devotion to his VIP. It is the impression that the Chairman W seeks from the start.







Smoother driving and power to spare.

Great power is always in reserve to ensure the safest and smoothest operation of the vehicle. The 5,000cc V8 engine designed by Mercedes-Benz delivers over 300hp in output, an unprecedented maximum displacement. The automatic transmission comes with seven forward and two reverse gears for a shifting performance that is virtually undetectable. The resulting ride is so smooth you almost forget your in motion.



XGi5000

The XGi5000 provides a range of peak flat torque that is unattainable with petrol engines, providing the driver with exceptional driving performance under all conditions.



XGi3600

The "silky 6" inline engines feature significantly improved NVH performance and optimised tuning of the power-train.



XGi3200



7 speed automatic transmission



Enhanced safety in the unlikely event of an accident.
10 airbags

“Smart” driver’s & passenger’s seat airbags deploy in two stages, depending on the position of the vehicle’s occupants. Side airbags in the front and rear protect the occupants’ chest and pelvic areas, while special airbags in front minimise injuries from knees striking the dashboard panel. Curtain airbags around the sides of the roof protect occupants’ heads in a side collision.



Electronically-activated head restraints
 Sensors calculate the force of a rear collision and immediately initiate a forward and upward movement of the headrest system to reduce the risk of cervical spine injuries.



High-rigidity body construction
 Safety is maximised through the use of ultrahigh tensile strength steel sheet and a high-rigidity body construction.



You will be surrounded by the sounds coming from the 7.1-channel through 17 speakers.

The Chairman W boasts the latest version of the Harman/Kardon entertainment system, also found in such big name luxury sedans as Maybach. Sound is delivered on a grand scale through the multi-number speakers, bringing you to a live performance in an opera house. Exciting audio and video realised by 8" LCD monitor and discrete logic 7, 7.1-channel receiver transforms the Chairman W into a place to relax, not just a vehicle.

harman/kardon®



Harman/Kardon entertainment system

This excellent infotainment system includes a terrestrial digital multimedia broadcasting access, a 40GB hard drive and six-DVD changer. A fun and relaxing environment is provided while traveling.

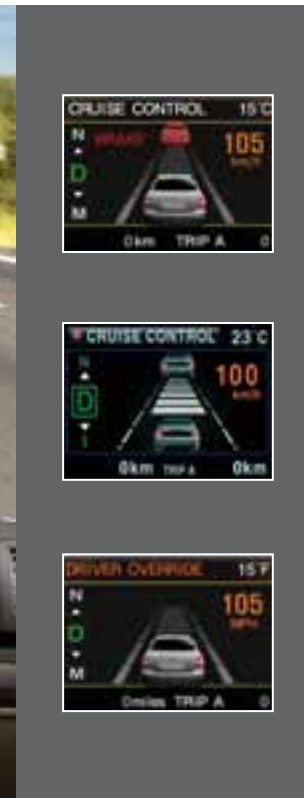


Discrete logic 7, 7.1-channel system

A total of seventeen speakers (center, front, side surround and sub-woofer) are arranged around the cabin and powered by a digital amplifier to generate sound on a grand scale. The discrete logic 7, 7.1-channel system ensures a consistently high audio quality is maintained throughout the cabin.

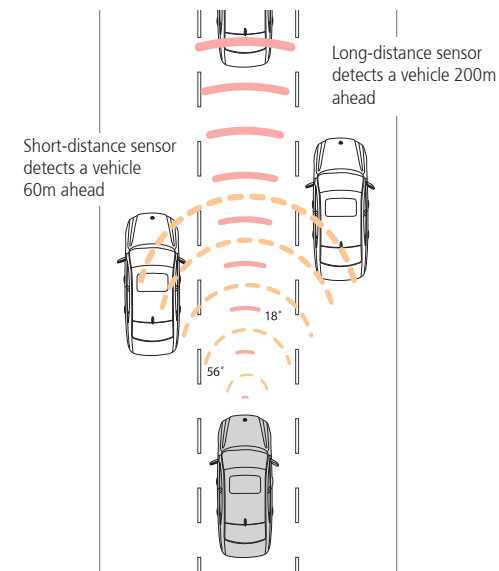
Like great leaders offering new vision,
the Chairman W adopts new technologies ahead of others.

The Chairman W introduces the active cruise control system that employs a third-generation wide scanning technology for the first time in the world. The system detects a long-distance angle of eighteen degrees for the front side and a short-distance angle of fifty-six degrees so that it automatically controls the distance from a vehicle running ahead, speed and location. The advanced system detects what the driver misses to bring you safely to your destination.



Active Cruise Control (ACC)

Wide scanning sensor in the next-generation ACC system helps detect cars running in front and on the side that the driver protects himself from a sudden lane change by a vehicle running on the side.



Ushering in the automotive future with next-generation technologies.

In the Chairman W, you can experience tomorrow's technologies today. Automatically adjusting engine mounts minimise vibration at different speeds, while the state-of-the-art active safety system (ASS) intervenes to put the vehicle under control in emergency situations. The driver doesn't need to hand off the steering wheel to change gears or adjust the audio. A touch on the screen allows him to adjust the AV system without distraction.



Driver Information System (DIS)

The driver can gain access to multimedia, automotive assistance system, and other functions through the 8" LCD monitor in the cutting-edge driver integrated system. He can also easily control the vehicle using touch screen, haptic controller in the rear seat and voice order.

Suit seat temperature to your taste

DIS allows you to adjust the seat temperature and the door-locking speed to your taste.



"Intelligent" electronically-controlled suspension
This parking brake can be engaged or released with the flip of a switch, simplifying the task of driving in complex urban environments.



Electric Parking Brake (EPB)
This sophisticated electric parking brake system is linked to the "intelligent" ESP system and operates with the flip of a switch. It enhances vehicular safety and driving convenience.





CW700/V8 5000 Limousine

A world-class limousine for VVIPs.

The classic limousine provides spacious seating in the rear for the maximum of comfort and ease. The seats adjust to individual body types, while the subdued lighting and automatic roller blinds enhance comfort and luxury.



EQUIPMENTS



Auto-leveling HID headlamps

These headlamps are 2.5 times brighter than the regular halogen projection model. The white light is close to natural sunlight that enhances visibility during nighttime driving. (China : not available)



LED outside mirror turn signal lamps & LED puddle lamps

Sophisticated LED turn signal lamps enhance safety and lowers wind noise. When the driver approaches or unlocks the vehicle, puddle lamps built in mirrors turn on for the driver's convenience.



Electric-powered doors

This system will automatically close a door that has been left ajar up to 7mm open. It is the mark of a truly premium full-size luxury sedan.



Safety power windows (all doors)

A simple touch of a button allows the driver behind the wheel and passengers in the front and rear seats to raise or lower the windows during driving.



Black face LED gauge cluster

Readability is superb due to a combination of sophisticated graphic design and ultra-bright white LEDs. The black-and-white dashboard stands out.



Power seats in back

The rear seats are split at a ratio of 6:4. They slide and tilt in numerous ways to accommodate any body type.



Adjustable Pedal System (APS)

The pedal height can be adjusted to suit the driver's individual body type.



Power tilting & telescopic steering wheel

The steering wheel can be freely adjusted to the driver's body type and driving modes.



Hidden 3-point washer nozzles

Washer fluid can be sprayed on the entire windshield simultaneously for better wiping capability. The spray nozzles are hidden to enhance the exterior appearance.



Water repellent glass

The front-side window is specially treated to prevent rainwater from impairing visibility. This enhances driving safety on rainy days.



Noise-proof glass (windscreen, all doors)

Glass in the windscreen and all doors are specially designed for noise control. They are also treated to lower indoor temperature, block sunlight, and protect privacy of VIPs by a UV-filtered rear window.



Rain & snow-sensing aero blade wipers

Windscreen wiping performance is excellent while traveling at high speed. The wiper speed is automatically adjusted to the changing volume of falling rain or snow.



Heated / Ventilated seats

The seats are heated to make traveling in cold weather as cozy as can be, while the active ventilation prevents sweat formation for greater comfort when the weather is hot and humid.



Power driver's seat / Power front passenger's seat

12-way driver seat and 4-way front passenger seat are adjustable for comfort. The multi-level adjustable seat helps the driver feel less tired after long-distance driving.



Foldable front passenger's seat

Foldable front passenger's seat allows the VIP in rear seat to have a better view and feel less confined.



Hidden-type switch module

Switches used infrequently are placed on a module that can be neatly tucked out of sight. They include controls for the: (1) Gauge cluster & switch illuminations (2) Air purification system (3) Adjustable pedal system (4) Trunk lid (5) Electronic Stability Program (ESP) off switch (6) Fuel tank filler flap (It opens only when the gear lever is at P or N.)



Electric-powered trunk lid / Umbrella holder in trunk

The driver or passenger doesn't need to put a golf bag to open or close the trunk. Remote control or simple switch function makes it possible. Umbrella holder in the trunk enhances convenience.



Electric-powered roller blinds

The rear window and rear door windows can be shaded by roller blinds for greater privacy and comfort.

***Key features**
 - All the roller blinds are raised and lowered with the touch of a button.
 (The blinds for the quarter glass are manually operated.)
 - Control buttons are available for both the driver and passengers in the rear seat.



Wide safety sunroof

The switch-operated sunroof slides and tilts in two stages. It automatically stops closing and reverses direction with a one-touch operation.



ECMs inside & outside

Electro-chromatic mirrors block glare from headlamps behind or beside the vehicle during nighttime driving.



Driver memory profile system

The system stores the driver's seat and outside mirror settings for up to three different people.



17" aluminum wheels

17" aluminum wheels help the vehicle stand out further on the road.



19" hyper-silver wheels

19" aluminum wheels that have solid and metallic looks help the vehicle stand out further on the road.



19" limousine-only wheels

19" limousine-only wheels are specially treated with a bright molding technology, which differentiates the vehicle from others.

INTERIOR COLOURS

Sedan CW600/CW700/V8 5000



Beige interior



Black interior

Leather seat covering



High-glossy woodgrain



Knit headlining



Limousine CW700/V8 5000L



Beige interior



Black interior

Leather seat covering



Texture woodgrain



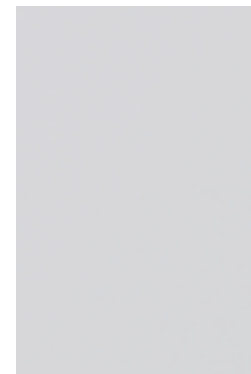
Suede headlining



EXTERIOR COLOURS



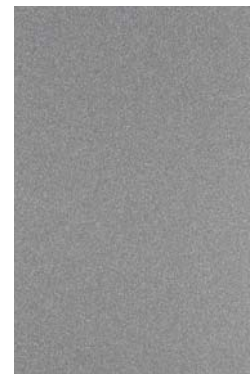
Classic Black **LAE**



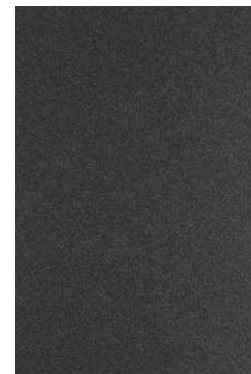
Grand White **WAA**



Sapphire Black **LBC**



Diamond Silver **SAK**



Titanium Gray **ACL**

RADIATOR GRILLE



Sedan (CW600/CW700/V8 5000)



Limousine (CW700L/V8 5000L)

LINE-UP

CW600



CW700/V8 5000



CW700L/V8 5000L

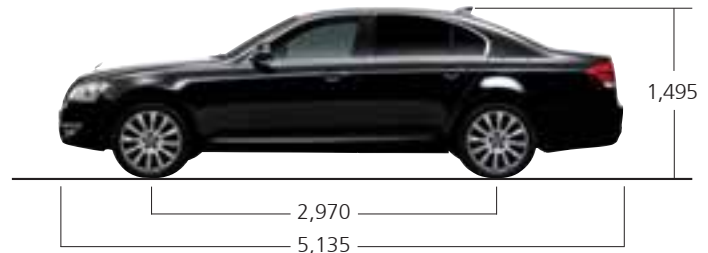


DIMENSIONS

Sedan



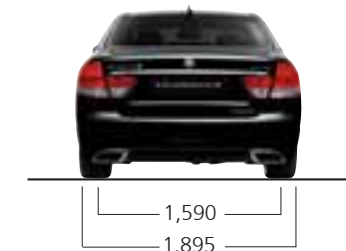
1,600



1,495

2,970

5,135



1,590

1,895

Limousine



1,495

3,270

5,435

TECHNICAL DATA

TRIM			CW600	CW600	CW700	CW700L	V8 5000	V8 5000L	
ENGINE			G28D	G32D	G36D	G36D	G50D	G50D	
TRANSMISSION			7A/T	7A/T	7A/T	7A/T	7A/T	7A/T	
Exterior dimension	Overall length	mm	5,135	5,135	5,135	5,435	5,135	5,435	
	Overall width	mm	1,895	1,895	1,895	1,895	1,895	1,895	
	Overall height	mm	1,495	1,495	1,495	1,495	1,495	1,495	
	Tread	Front	mm	1,600	1,600	1,600	1,600	1,600	1,600
		Rear	mm	1,590	1,590	1,590	1,590	1,590	1,590
	Overhang	Front	mm	945	945	945	945	945	945
		Rear	mm	1,220	1,220	1,220	1,220	1,220	1,220
	Wheel base	mm	2,970	2,970	2,970	3,270	2,970	3,270	
	Min. clearance	mm	175	175	175	175	175	175	
	Min. turning radius	m	5.6	5.6	5.6	6.1	5.6	6.1	
Interior dimension	Length	mm	1,990	1,990	1,990	2,290	1,990	2,290	
	Width	mm	1,525	1,525	1,525	1,525	1,525	1,525	
	Height	mm	1,190	1,190	1,190	1,190	1,190	1,190	
	Couple distance	mm	937	937	937	1,237	937	1,237	
Weight	Gross vehicle weight	kg	2,490	2,490	2,490	2,580	2,490	2,580	
	Kerb weight	kg	1,949	1,948	1,973	2,060	1,936	2,022	
Engine	Fuel		Petrol						
	Fuel tank	ℓ	83	83	83	83	83	83	
	Displacement	cc	2,799	3,199	3,598	3,598	4,966	4,966	
	Bore	mm	89.9	89.9	90.9	90.9	97.0	97.0	
	Stroke	mm	84.0	84.0	92.4	92.4	84.0	84.0	
	Compression ratio		10.0:1	10.0:1	10.0:1	10.0:1	10.0:1	10.0:1	
	Number of cylinders		6	6	6	6	8	8	
	Configuration		In-Line	In-Line	In-Line	In-Line	V	V	
	Max. power	kW/rpm	145 / 6,000	165 / 6,600	184 / 6,600	184 / 6,600	225 / 5,600	225 / 5,600	
		ps/rpm	200 / 6,000	225 / 6,600	250 / 6,600	250 / 6,600	306 / 5,600	306 / 5,600	
Max. torque	Nm/rpm	265 / 4,600	296 / 4,600	343 / 4,000	343 / 4,000	441 / 4,000	441 / 4,000		
	kg.m/rpm	27.0 / 4,600	30.2 / 4,600	35.0 / 4,000	35.0 / 4,000	45.0 / 4,000	45.0 / 4,000		
Max. speed	km/h	195	205	210	210	245	245		
Clutch		Torque converter							
Transmission type		T-tronic 7-speed automatic transmission with winter mode (Mercedes-Benz)							
Transmission	Gear ratios	1st	4.377	4.377	4.377	4.377	4.377	4.377	
		2nd	2.859	2.859	2.859	2.859	2.859	2.859	
		3rd	1.921	1.921	1.921	1.921	1.921	1.921	
		4th	1.368	1.368	1.368	1.368	1.368	1.368	
		5th	1.000	1.000	1.000	1.000	1.000	1.000	
		6th	0.820	0.820	0.820	0.820	0.820	0.820	
		7th	0.728	0.728	0.728	0.728	0.728	0.728	
		Reverse 1st	3.416	3.416	3.416	3.416	3.416	3.416	
Reverse 2nd	2.231	2.231	2.231	2.231	2.231	2.231			
Chassis	Steering system		Rack & Pinion						
	Suspension	Front	Multi-link						
		Rear	Multi-link						
	Brakes	Front/Rear	V/disc / V/disc						
	Tyres		235/55R17, 245/45R19						
Wheels		17" alloy wheel, 19" alloy wheel							

FEATURES LIST

STANDARD FEATURES LIST
COMFORT & CONVENIENCE
Power tilting & telescoping steering wheel with memory & easy access
Leather steering wheel with remote controlled audio
Memory, heating, electric adjustable & auto down outside mirror
Electronic chromic mirror (ECM) inside mirror
ECM outside mirrors (*CW600 available as individual option)
Rear vanity mirrors
Heated windshield glass
Rain & snow-sensing aero blade wipers
Driver seat - memory & height adjust with electronically activated head restraint
Passenger seat - electric adjust & folding seat with electronically activated head restraints
Rear seat - bench & fixed
Auto light control system
Rearview camera for safety
Black face LED gauge cluster
Multifunctional dual-zone air control system with AQS
DVD system
- Front 8" TFT LCD monitor
- 6-disc DVD changer
- Haman-Kardon 7.1-channel surround sound system
17 speakers
Driver's manual lumbar support
Leather & woodgrain transmission gear shift (TGS) knob
Front/rear lighted door scuff plates
Deluxe service mats
Luggage net
Leather seat cover
Bluetooth hands free
SAFETY & SECURITY
Electronic stability program (ESP) including electronic brake force distribution (EBD), anti-lock brake system (ABS), anti-spin regulator (ASR), brake assist system (BAS) & hill start assist (HSA)
Electronic parking brake
Disc brake : 17" V/disc (front) & V/disc (rear)
Safety power windows for all doors
Front dual airbags
Dual side & curtain airbags
Powered pre-tensioner & load limiter seatbelt
Dual smart key system
Memory-type adjustable pedal system
Emergency stop signal
APPEARANCE
17" alloy wheels with P235/55R "V"-rated tyres
Projection headlights
LED turn signal & brake lights
LED rear combination lamps
Front/rear fog lamps
SUS-lined greenhouse
SUS molding around roof
Integrated antenna
Dual mufflers
Welcoming light to illuminate the ground area
LIMOUSINE
ADDITIONAL FEATURES
IL6 DOHC 250ps 3,598cc
V8 306ps 4,966cc
19" alloy wheels with P245/45R "W"-rated tyres (bright molding)
Disc brake : 19"V/disc (front) & V/disc (rear)
Rear seat - Individual & tilt
- Power with easy access
- Headrest manual up-down & tilting
- Belt tension reducer & adjustable type anchor
- Rear centre armrest with storage console
Seat adjustable switch
Leg rest for rear right passenger
Vehicle air purification system (VAPS)
Mood lamp on B pillar
Deluxe head lining & door trim - elegant suede
Deluxe woodgrain for crash pad & door trim
Classic limousine body & emblem
Active cruise control (*V8 5000L : standard)

MECHANICAL

E-tronic 7-speed automatic transmission with winter mode (Mercedes-Benz)
IL6 DOHC 200ps 2,799cc
IL6 DOHC 225ps 3,199cc
IL6 DOHC 250ps 3,598cc
V8 306ps 4,966cc
Intelligent electronic control suspension (IECS)
Multi-link front suspension
Multi-link rear suspension
Gas strut hood & trunk opening
Speed sensing power steering (SSPS)
83L-fuel tank

AVAILABLE FEATURES LIST						
MODELS	CW600	CW600	CW700	CW700L	V8 5000	V8 5000L
OPTION PACKAGES	G28D	G32D	G36D	G36D	G50D	G50D
VIP convenience	-	-	○*	○*	○*	○*
- Passenger head rest folding						
- Side neck rear head rest						
- Electric-powered roller blinds (rear door & rear window)						
- Front/rear variable seat warmer						
- Rear ventilated seat						
- Power massage rear VVIP seat						
Rear seat power	○	○	○	S	○	S
- Rear seat (power window with easy access, head rest manual up-down & tilting, belt tension reducer & adjustable type anchor)						
- Rear centre armrest with storage console (control switch & cup holder)						
Sunroof	○	○	○	-	○	-
- Sunroof						
- Head lining for sunroof						
- Room lamp sunroof switch						
Rear LCD monitor	-	-	○*	○*	○*	○*
- Power & hidden-type 8" TFT LCD monitor						
- Rear centre armrest with rear aircon control						
HID & PAS (China : not available)	○	○	○	○	○	○
- High-intensity discharge (HID) front head lamp						
- Auto leveling						
- Front & rear parking aid system (PAS)						
Glazing	○	○	○	○	○	○
- Laminated & solar front door glass						
- Laminated & privacy rear door glass						
- Solar rear glass						
Seat warmer	○	○	○	○	○	○
- Front variable seat warmer (driver & passenger)						
Ventilated seat	○**	○**	○**	○**	○**	○**
- Front ventilated seat (driver & passenger)						
Driver convenience	-	-	○	○	○	○
- Driver seat massage						
- Driver power lumbar support						

INDIVIDUAL OPTIONS	CW600	CW600	CW700	CW700L	V8 5000	V8 5000L
Leather & woodgrain steering wheel & remote controlled audio with heating	-	-	○	○	○	○
Active cruise control	-	-	○	○	S	S
Front & rear seat warmer	○	○	-	-	-	-
19" alloy wheel with P245/45R "W"-rated tyres (hyper silver)	○	○	○	-	S	-
ECM outside mirror	○	○	S	S	S	S
Rear side airbags	○*	○*	○*	○	○*	○
Knee protection airbags	○	○	○	○	○	○
Black face LED cluster - TFT type	-	-	○	○	○	○
Electric-powered doors	-	-	○	○	○	○
Front & rear PAS (China only)	○	-	○	○	-	-
Rear center 3-point seatbelt	○	○	○	○	○***	○

※○* : available if rear seat power pack is selected. ※○** : available if seat warmer pack is selected.
 ※○*** : VAPS deleted if rear center 3-point seatbelt for CW700L or V8 5000 is selected.
 ※Some of features may be optional or not be available according to market. Please contact your local dealer for the exact details regarding vehicles sold in your area.

Live the life of the Chairman W

